



Chris van Uff

Living in Style

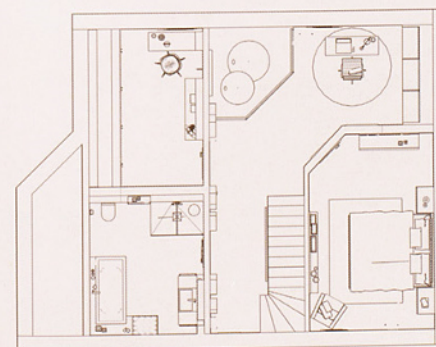
Architecture + Inter



BRAUN



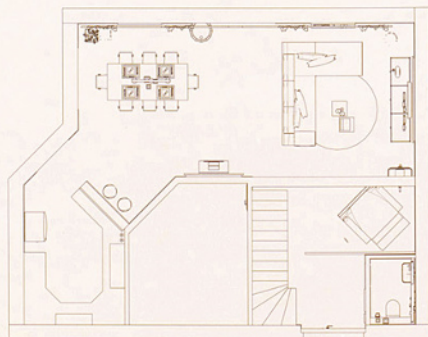
The clever storage elements built into this design leave enough leftover space for a car to be integrated into the living room layout.



42.20 m² open-plan living
17.40 m² sleeping
14.9 m² kitchen
11.60 m² bathrooms



This 180-square-meter residential house was built in 2004 and renovated and refurbished in 2013. The clients worked closely together with the interior architects in order to ensure that various much-loved pieces were incorporated into the new design. The cupboards built into the sloping ceiling on the upper floor create a wealth of storage space. The selected colors and materials give the space an overall more peaceful and harmonious character. The lighting design also plays an important role in defining the individual areas and developing a variety of atmospheres.



REDESIGN OF APARTMENT IN MÖNCHENGLADBACH

Designed for a real VW Beetle enthusiast.



Architect | raum.atelier
Gross floor area | 600 m²
Address | 41066 Mönchengladbach, Germany
Completion | 2013
Number of residents | 2 adults

